

azimutGPS

USER MANUAL

AzimutGPS is an application for windows mobile based devices, which allows you to view, navigate and localize in a map with coordinates system UTM and WGS84 datum. It also allows current path tracking, plot way for a known point, viewing direction of the north, altitude and other information.

AzimutGPS can use two type of maps:

- Raster: (tif+tfw or jpg+jgw) Every map that you want load with azimutGPS must be first converted by rastergen utility, see the end of this manual to do this.
- Shape: it is a very common format for maps storing. azimutGPS is the only software on the market with full support for Shapefiles.

INSTALLATION

Before install azimutGPS, you must download and install .NET compact framework 2.0 from Microsoft site.

Download azimutGPSx.x.cab setup in our site <http://azimutsoft.com> and copy it inside your device.

From device select Start->file explore and after select directory where you have copied setup, now click on it to start install, setup will ask you which directory application will be installed.

At the end of installation process, you can start application through link on start menu or application directory.

FIRST START

First start show you login form in fig. 1

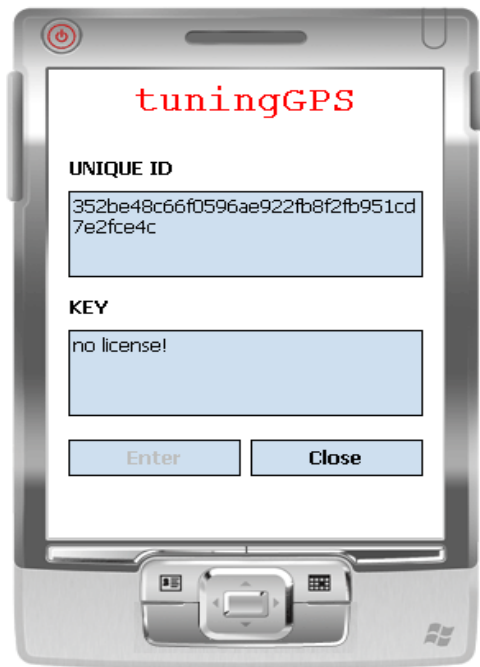


Fig. 1: Login form

To start application you must click on Enter button. If you don't have a license key Enter button is disabled and box key show "no license".

For license purchasing you can go in shop area of our site:

<http://azimutsoft.com/>

If you buy a license we send a license.dat file that must be copied into azimutGPSfull directory inside device.

Now if you start application Enter button is enabled, click on them to start azimutGPS.

MANAGE azimutGPS

After first access you can see main form in Fig. 2



Fig. 2: Main form

In the top of form you see map and in bottom side you see management menu. There is two way to use azimuthGPS:

- GPS Off: you can scroll map by clicking on it in the left, right, top or bottom side. You can zoom backward and forward by clicking on minus or plus buttons.
- GPS On: map will auto-center in your current position and mark it by an yellow circle, you can zoom but you can not scroll. The current coordinates are marked in blue bar under map. Top side of map contains speed, altitude and direction to nord if no feature acived (see fig2.1), instead contains point distance if goto or load path was activated. (see fig2.2)



Fig2.1

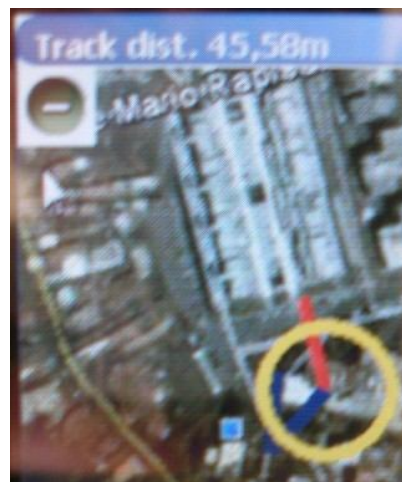


Fig2.2

When you start application, it has not set any map, to select a map simply click on the Setting button, the menu that appears visible in Figure 3, allows you to select the map and initial position (used like default position if GPS is turned off).



Fig. 3: Setting menu

To map selection you must click "choose map" button, it causes window opening that allows you to scroll and chose through your system folder.

You must select any file of map directory chosen, application automatically load all maps in that folder.

Note: It is advisable to include in maps folder only necessary maps file to avoid unnecessary delays.

You can also type into two text boxes, departure point coordinates in Geographic WGS84 format. Initially departure point have a default value, but once you enter your home, it become default.

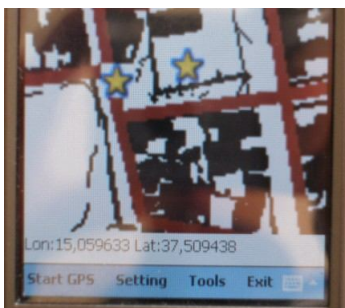


Fig. 4: loaded map with raster and shape

When you load a map, to center your position on it you must click Start GPS. Application try to connect with COM8 default port of antenna, if there's no antenna in COM8 setting form in fig. 5 will be open (Note that bluetooth device must be involved through pocket pc settings menu).

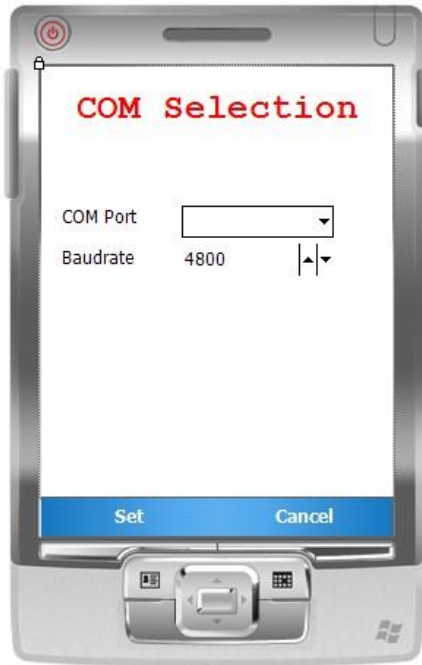


Fig. 5: GPS antenna selection

Once GPS is enabled, you can use various features through tools menu.



Fig. 6: tools menu.

- **Goto point**. Through this feature you can reach a point where you know the coordinates (geographical WGS84), it is widely used for geocaching, and will allow you to achieve your "cache" without too much difficulty.

To active goto feature you must access menu in Fig. 7 and enable disabled checkbox to reach indicated point in same menu, you can chose to reach Home, car parking previously setted by mark parking button or point inserted by this menu box.

Goto is activated when map window shown a red line that connects your current location with chosen point see Figure 8. When goto is active, blue top bar of map show distance to point.



Fig. 7: goto window

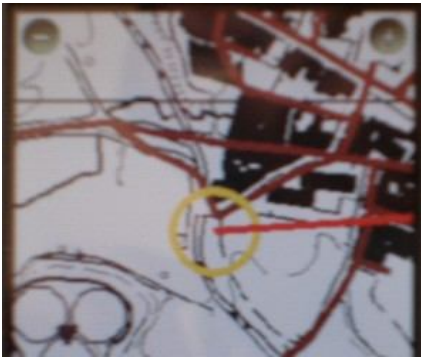


Fig. 8: goto feature activated

- **Track path:** Through this feature is traced the path that you runs, from time when it is activated. The track is represented by a green line.

You can activate tracking by enable checkbox in Fig. 9 menu.



Fig. 9: enable tracking and path saving

When tracking is activated, "Save current path" button will be enabled, with it you can export your track in *. kml google earth format.

Note: disable tracking will cause path deletion.



Fig. 10: a map with track and goto active

- **Load path:** By enabling this feature you can load a previously saved kml trace, this feature allows for example to take mountain paths not present on traditional maps.

route is marked with a blue trace, also first loading plot along path a line that connects your current position at initial point of trace and blue top bar of map show distance to point, reached that point these signs disappear.



Fig 10.1 kml trace loaded

- **GPS info:** Selecting this item from tools menu will be open window in Figure 11, which shows data for navigation

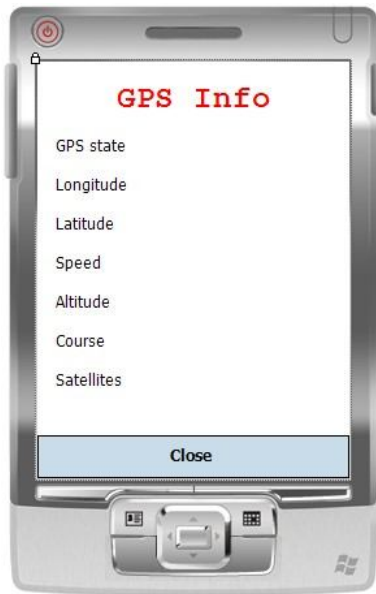


Fig. 11: GPS information

- **Mark parking:** clicking on this menu item is currently stored the position marked on the map.

This functionality is used to store parking coordinate of your vehicle, so that you can easily find by activating goto function.

CREATE A MAP

azimutGPS allows you to load raster maps in UTM WGS84, the maps are usually available as a tif with tfw for associated coordinates, you must convert map because pocket pc devices do not support tiff (too fat).

Azimut Soft has created a free rastergen utility that allows maps conversion, it is available in download area of site. All raster maps that you want to be loaded with azimutGPS must be first converted with this utility.

RasterGen can manage two type of maps:

- Tif with tfw
- Jpg with jgw

Note: Some raster maps may have coordinates associated with several extensions, in which case you must rename in tfw extension.

Rastergen creates into chosen folder a new map with a file system called GEO.txt and converted raster into PNG.

To create map you must click “create map” button in figure 12

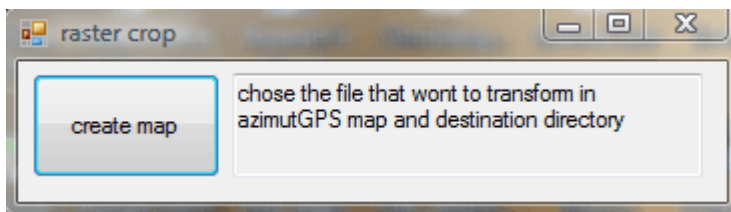


Fig. 12 rastergen

Initially, you should select the files to be cut from window that appears and then the destination folder where you want create map.

There is the possibility of cutting more rasters simultaneously selecting them together or with dragging or letting down the control key and selecting the files one by one, this is also the advantage of creating a single map from multiple raster maps.

When map is created an info window will appear.

Created map must be copied with folder in your device and then select it from setting menu of azimuthGPS, note that if you want load shape map with raster map you must be place shapefiles into same folder of raster map.

DISCLAIMER

Software license is only for one device and it is prohibited to install on different device.

License key is provided upon payment and is not transferable, license key provide software update for new release.

Windows mobile based device with 240x320 resolution are supported, position accuracy depend of your GPS hardware and tracked satellites.

Application can work with all NMEA WGS84 GPS device.

Azimut Soft is not responsible for any damage to property and / or persons due to undisciplined use of software, which should be used under existing safety standards.